

HYATT REGENCY LONDON - THE CHURCHILL

30 Portman Square
London W1H 7BH
United Kingdom

T: +44 (0)20 7486 5800
F: +44 (0)20 7486 1255
E: london.churchill@hyatt.com
london.churchill.hyatt.com
@HyattChurchill



ACCOMMODATION

- 440 well-appointed guestrooms, including 50 suites, 273 king and 90 twin rooms, most of which are recently refurbished in a quintessentially British style
- Premium suites include the Premium Balcony Suites and the one of a kind Royal Suite

All Accommodations Offer:

- Complimentary high-speed Wi-Fi
- Newly refurbished rooms boast advanced technology including multi-socket outlets and Japanese TOTO toilets
- 40-inch flat-panel LED Television with a wide range of international channels and pay-per view movies
- Complimentary water
- Tea and coffee making facilities
- Dual-line telephone with separate voicemail
- Shower, bath amenities and hair dryer
- In-room safety deposit box
- Iron and ironing board
- Individual climate control
- Two Regency Club™ lounges for all-day dining, private concierge and check-in/out

RECREATIONAL FACILITIES

- The Churchill Fitness Suite (open 24 hours)
- Outdoor floodlit tennis court, jogging track and playground in the private Portman Square Garden opposite the hotel

SERVICES & FACILITIES

- Multi lingual staff and concierge service
- 24 hour Room Service
- Newspapers available upon request
- Dry cleaning and laundry
- 24 hour Business Centre in Lobby
- Concierge & Co. hotel souvenir shop
- Tesla Superchargers
- Babysitting & crib upon request
- Private transfers available with hotel's BMW
- Airport limousine on request

RESTAURANTS & BARS

- The Montagu Kitchen — A vibrant all-day dining restaurant to relax and indulge in a wide range of British seasonal dishes, all of which are prepared in a striking open kitchen. Also famed for Afternoon Tea, Sunday Brunch, and the Chef's Table
- The Churchill Bar & Terrace — With its own entrance on Portman Square and a creative menu of cocktails and spirits, the award-winning bar also boasts a seasonally themed private terrace, ideal to relax with friends, family and colleagues
- Locanda Locatelli — Award-winning Michelin star fine dining restaurant with authentic Italian cuisine

MEETING & EVENT SPACE

- 627 m² / 6749 ft² of flexible event space accommodating between 10-350 guests
- 11 meeting and event rooms, including a ballroom & 3 newly-refurbished modern 2nd floor event spaces boasting the latest technology and natural daylight
- Three interconnecting meeting and event rooms
- Natural daylight in six meeting rooms
- Wedding licence
- Access to picturesque Portman Square Garden for events up to 450 pax

LOCATION

One of the finest hotels in London, Hyatt Regency London - The Churchill enjoys a prime location in Central London's West End, close to exclusive shopping and the City. Its positioning in the chic Marylebone area, adjacent to Park Lane, ensures that it is one of the best situated 5 star hotels in London from which to explore Hyde Park, Marble Arch and Buckingham Palace, some of London's most celebrated landmarks. The hotel is just two minutes from the nearest tube station, Marble Arch and the exclusive shopping areas of Oxford Street, Soho or Bond Street.

DIRECTIONS FOR TRAVELERS

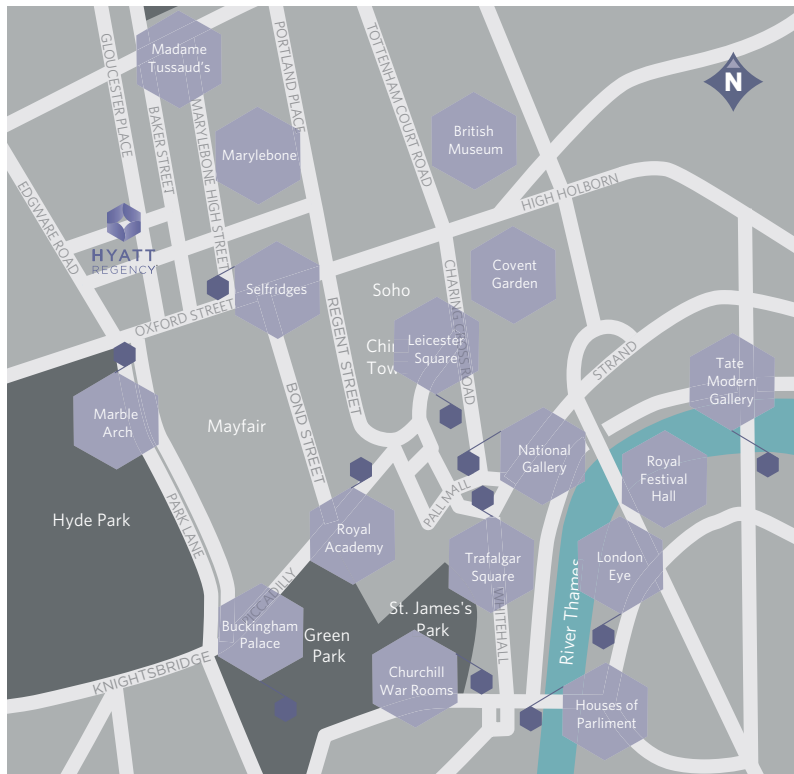
Accessible from London's major airports & within 10 to 20 minutes, from several of London's main train stations. We are 15 minutes from Paddington, where the Heathrow Express connects Heathrow Airport in just 15 minutes.

POINTS OF INTEREST

London Attractions: Big Ben, Tower of London, The London Eye, The Tate Modern Gallery, Madame Tussaud's, Hyde Park, British Museum, National Gallery, Buckingham Palace, Houses of Parliament, St. Paul's Cathedral, Hyde Park, West End Shopping, Theatres, Churchill War Rooms.

VISITOR INFORMATION

- Language: English
- Currency: British Pound (GBP)
- Voltage: 240 volts
- Climate: London has a pleasant climate with warm summers and mild winters. The temperatures vary from 0°C / 32°F in Winter to 21°C / 70°F in Summer
- Visas: EU / EEA nationals do not require a visa to enter the UK, other nationals should contact the British Consulate



HYATT REGENCY LONDON - THE CHURCHILL

30 Portman Square
London W1H 7BH
United Kingdom

T: +44 (0)20 7486 5800
F: +44 (0)20 7486 1255
E: london.churchill@hyatt.com
london.churchill.hyatt.com
@HyattChurchill



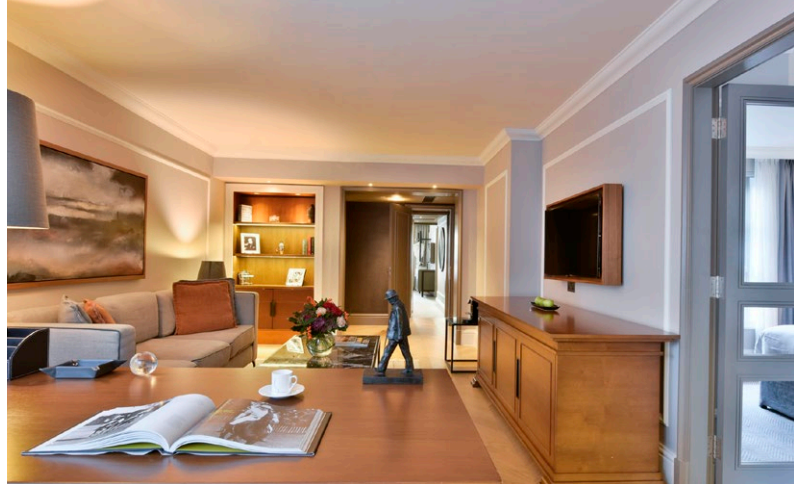
CAPACITY CHART



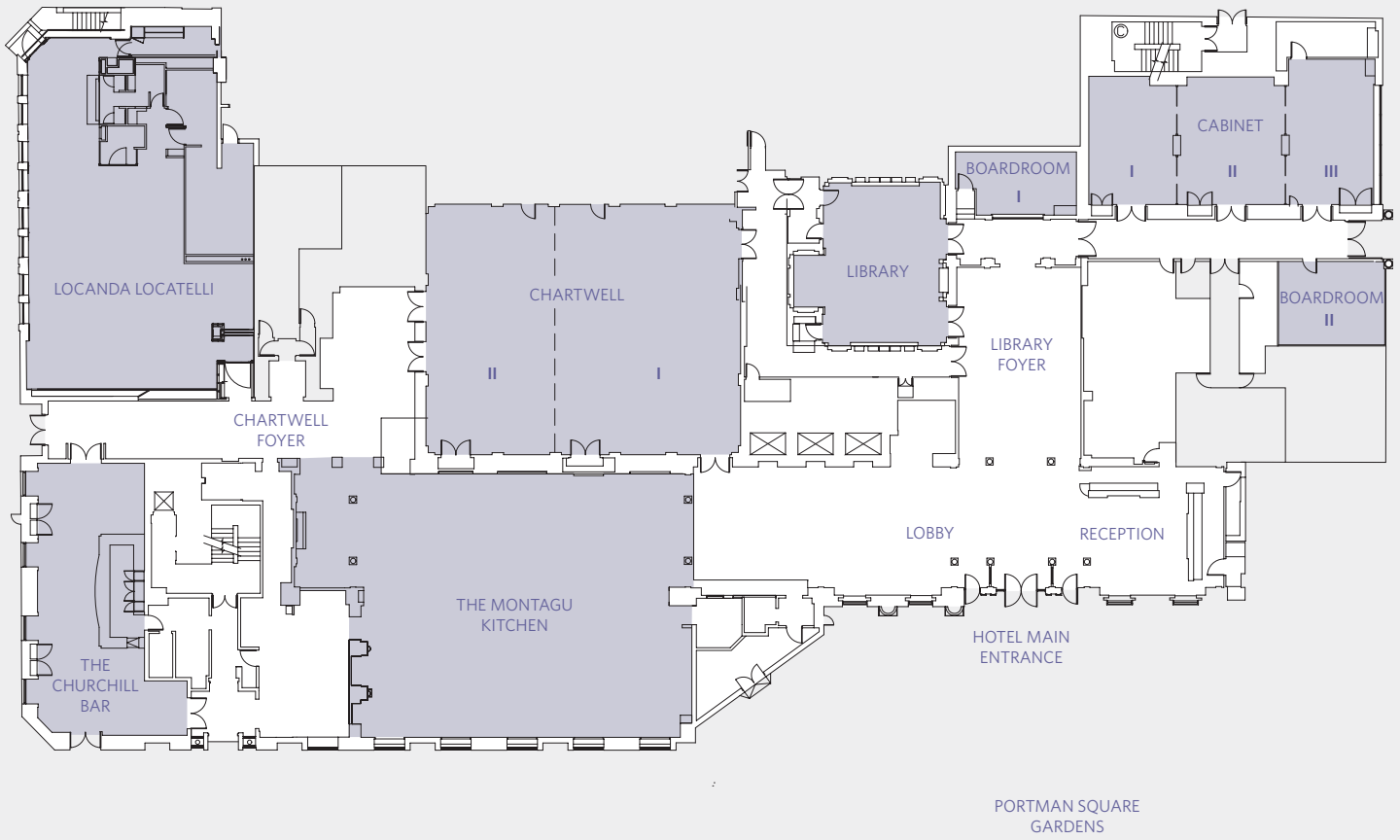
Room Name	Room Dimensions L x W x H	Room Size Sq. M. / Sq. Ft.	Banquet	Reception	Theatre	Cabaret	Classroom	Boardroom	U-Shape	Hollow Square
Ground Floor										
CHARTWELL SUITES	17.3m x 14m x 3.6m 57' x 46' x 11.8'	242.2 2662	240	350	260	160	180	48	68	85
Chartwell I	10.2m x 14m x 3.6m 33.5' x 46' x 11.8'	142.8 1541	144	200	140	80	90	36	42	56
Chartwell II	7.1m x 14m x 3.6m 23.3' x 46' x 11.8'	99.4 1072	96	100	100	60	63	36	38	42
THE CABINET SUITES	22.2m x 4.9m x 2.3m 72.8' x 16' x 7.5'	108.8 1165	100	120	-	-	-	-	-	-
Cabinet I	7.1m x 4.9m x 2.3m 23.3' x 16.05' x 7.5'	34.8 374	30	40	32	24	24	18	18	18
Cabinet II	7.1m x 6.0m x 2.3m 23.3' x 19.7' x 7.5'	42.6 459	40	40	40	32	24	20	20	18
Cabinet III	8.0m x 4.9m x 2.3m 26.2' x 16' x 7.5'	39 419	30	40	32	24	24	20	18	18
LIBRARY	9m x 6.9m x 3.4m 29.5' x 22.6' x 11.2	62.1 667	50	100	60	40	32	30	28	32
BOARDROOM I	6.7m x 3.5m x 2.1m 22' x 11.5' x 6.9'	23.5 253	-	-	-	-	-	10	-	-
BOARDROOM II	4.75m x 3.5m x 2.3m 15.6' x 11.5' x 7.5'	16.6 179	-	-	-	-	-	8	-	-
Second Floor										
MARLBOROUGH	11.7m x 5.6m x 2.4m 38.4' x 18.4' x 7.9'	65.5 706	60	80	60	40	45	30	27	35
BLenheim	7.7m x 7.4m x 2.4m 25.3' x 24.3' x 7.9'	57 615	48	60	50	32	40	20	20	32
SPENCER	6.7m x 7.2m x 2.3m 21.3' x 23.6' x 7.5'	48.7 503	50	40	40	40	24	16	16	22

HYATT REGENCY LONDON - THE CHURCHILL
30 Portman Square
London W1H 7BH
United Kingdom

T: +44 (0)20 7486 5800
F: +44 (0)20 7486 1255
E: london.churchill@hyatt.com
london.churchill.hyatt.com
@HyattChurchill



FLOOR PLAN
Ground Floor



Second Floor

