

HYATT REGENCY CHICAGO
 151 East Wacker Drive
 Chicago, Illinois 60601, USA
 T +1 312 565 1234
 F +1 312 239 4541
 chicago.regency.hyatt.com

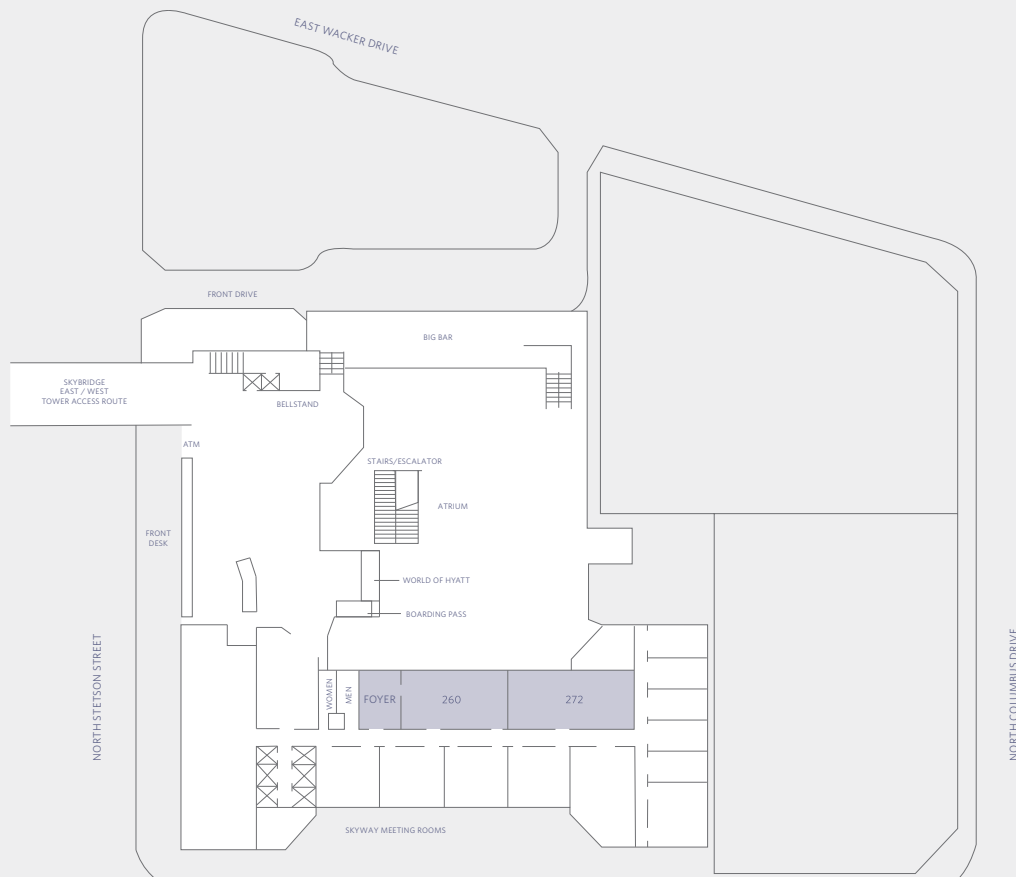


CAPACITY CHART



Room Name	Room Dimensions L x W x H	Room Size Sq. Ft.	Banquet 6' Rnds of 10 (No AV)	Reception	Theater (AV)	Classroom (AV)	Boardroom	U-Shape	Hollow Square	Exhibit
Skyway Level (East Tower)										
SKYWAY MEETING ROOMS										
Skyway Foyer	27'9" x 21'4" x 9'	507	—	40	—	—	6	—	—	—
Skyway 260	23'3" x 43'1" x 9'	961	40	100	51	36	30	—	—	—
Skyway 272	23'3" x 41'2" x 9'	811	40	70	45	36	28	—	—	—

FLOOR PLAN



Note: Above setups are tables and chairs ONLY without space left for other equipment such as staging, AV, display tables, registration tables or coffee breaks.

HYATT REGENCY CHICAGO
 151 East Wacker Drive
 Chicago, Illinois 60601, USA
 T +1 312 565 1234
 F +1 312 239 4541
 chicago.regency.hyatt.com

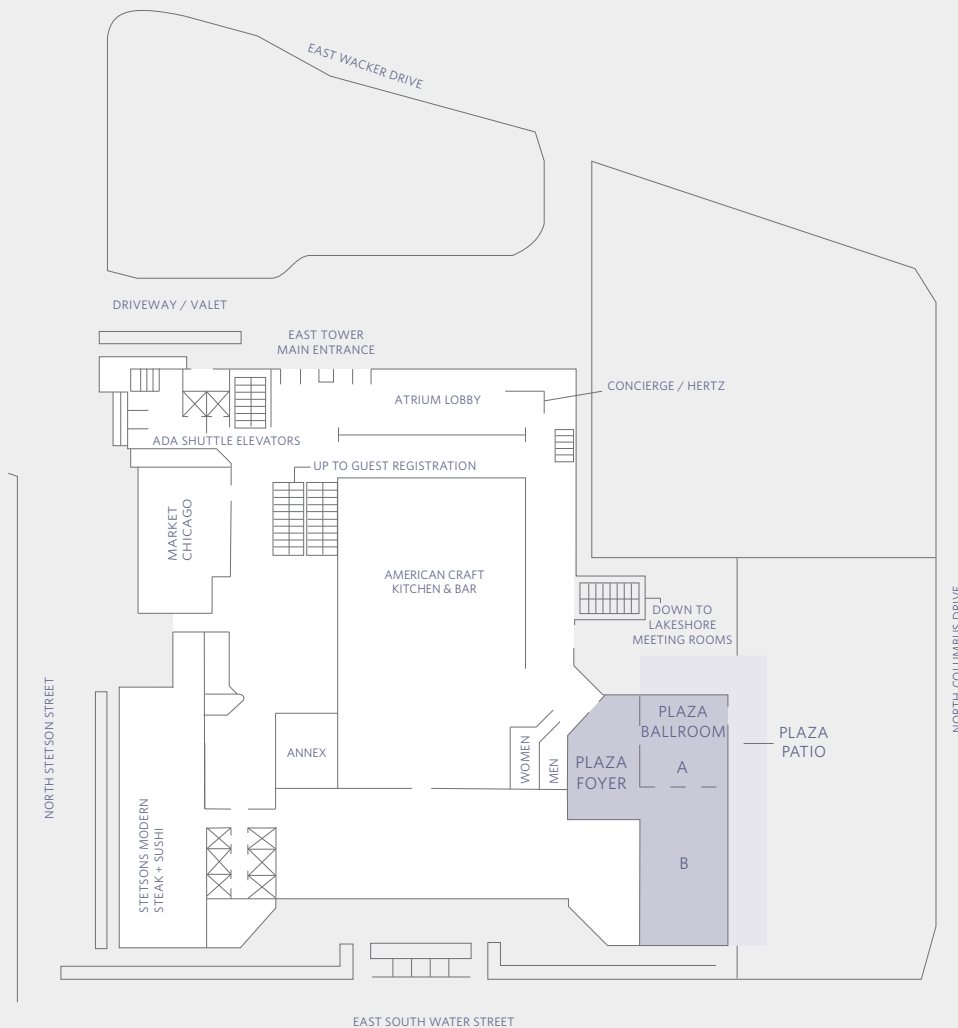


CAPACITY CHART



Room Name	Room Dimensions L x W x H	Room Size Sq. Ft.	Banquet 6' Rnds of 10 (No AV)	Reception	Theater (AV)	Classroom (AV)	Boardroom	U-Shape	Hollow Square	Exhibit
Lobby Level (East Tower)										
PLAZA BALLROOM	92'9" x 28'9" x 10'6"	2,652	140	250	200	159	60	70	72	—
Plaza A	39'3" x 28'9" x 10'6"	1,128	60	130	70	63	24	30	32	—
Plaza B	53' x 28'9" x 10'6"	1,524	80	150	130	96	36	40	40	—
Plaza Patio	34'5" x 115'3" x 9"	1,925	—	—	—	—	—	—	—	—
Plaza Park	— x — x —	—	—	—	—	—	—	—	—	—

FLOOR PLAN



Note: Above setups are tables and chairs ONLY without space left for other equipment such as staging, AV, display tables, registration tables or coffee breaks.

HYATT REGENCY CHICAGO
 151 East Wacker Drive
 Chicago, Illinois 60601, USA
 T +1 312 565 1234
 F +1 312 239 4541
 chicago.regency.hyatt.com



CAPACITY CHART



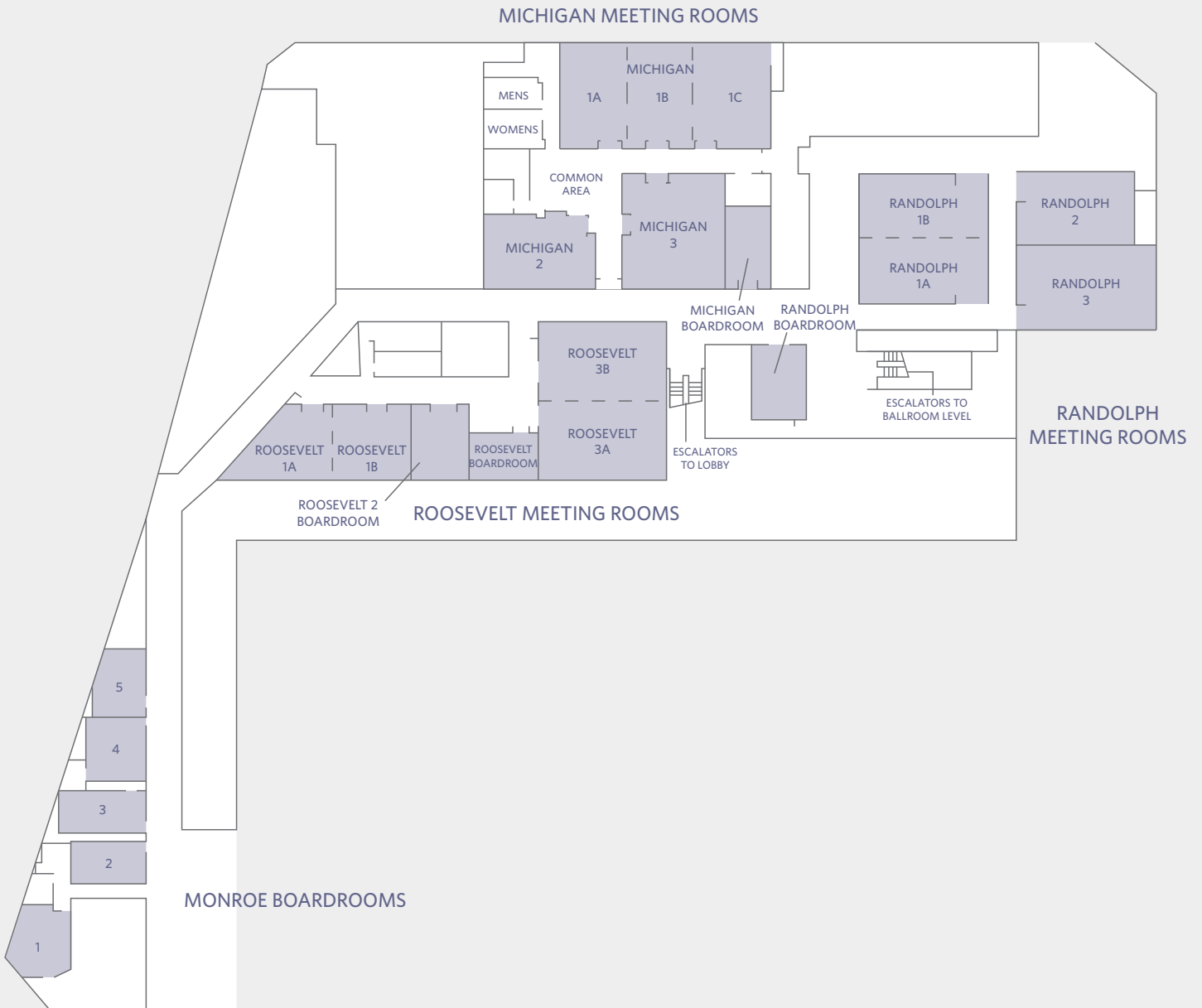
Room Name	Room Dimensions L x W x H	Room Size Sq. Ft.	Banquet 6' Rnds of 10 (No AV)	Reception	Theater (AV)	Classroom (AV)	Boardroom	U-Shape	Hollow Square	Exhibit
Concourse Level (East Tower)										
LAKESHORE MEETING ROOMS										
Michigan 1A, 1B, 1C	33'4" x 74'5" x 8'6"	2,475	140	250	270	135	40/50*	69	78	—
Michigan 1A	33'4" x 25' x 8'6"	825	50	80	66	42	22	21	24	—
Michigan 1B	33'4" x 24.5' x 8'6"	760	50	75	66	42	22	21	24	—
Michigan 1C	33'4" x 25.5' x 8'6"	841	50	80	66	42	22	21	24	—
Michigan 2	26.5' x 39' x 8'6"	1,033	50	100	80	50	28	24	30	—
Michigan 3	41.5' x 34' x 8'6"	1,390	60	135	90	60	34	30	36	—
Michigan Boardroom	26' x 15' x 8'6"	390	—	—	—	—	12	—	—	—
Randolph 1A & 1B	33' x 46' x 8'6"	1,767	100	175	108	60	40	40	48	—
Randolph 1A	33' x 23' x 8'6"	819	50	80	50	27	28	21	24	—
Randolph 1B	33' x 23' x 8'6"	819	50	80	50	27	28	21	24	—
Randolph 2	36' x 26'9" x 8'6"	922	50	90	60	30	28	24	30	—
Randolph 3	42' x 29'10" x 8'6"	1,192	70	120	84	48	34	30	36	—
Randolph Boardroom	23' x 16' x 8'6"	368	—	—	—	—	10	—	—	—
Roosevelt 1A & 1B	27'6" x 42' x 8'6"	1,186	60	125	70	42	40	39	42	—
Roosevelt 1A	27'6" x 26'16" x 8'6"	599	30	50	28	18	28	18	21	—
Roosevelt 1B	27'6" x 26' x 8'6"	587	30	70	32	18	28	15	18	—
Roosevelt 2 Boardroom	25' x 17' x 8'6"	425	—	—	—	—	12	—	—	—
Roosevelt Boardroom	17' x 21' x 8'6"	357	—	—	—	—	8	—	—	—
Roosevelt 3A & 3B	30' x 55' x 8'6"	1,650	100	165	132	78	52	54	60	9
Roosevelt 3A	30' x 28' x 8'6"	840	40	80	60	42	28	24	36	—
Roosevelt 3B	30' x 27' x 8'6"	810	40	80	60	42	28	24	36	—
Monroe 1 Boardroom	24'6" x 19'9" x 8'6"	400	—	—	—	—	10	—	—	—
Monroe 2 Boardroom	20'6" x 15' x 8'6"	307	—	—	—	—	8	—	—	—
Monroe 3 Boardroom	24'6" x 15' x 8'6"	367	—	—	—	—	12	—	—	—
Monroe 4 Boardroom	18' x 22'6" x 8'6"	405	—	—	—	—	10	—	—	—
Monroe 5 Boardroom	16' x 21' x 8'6"	336	—	—	—	—	14	—	—	—

Note: Above setups are tables and chairs ONLY without space left for other equipment such as staging, AV, display tables, registration tables or coffee breaks.

HYATT REGENCY CHICAGO
151 East Wacker Drive
Chicago, Illinois 60601, USA
T +1 312 565 1234
F +1 312 239 4541
chicago.regency.hyatt.com



FLOOR PLAN
Concourse Level (East Tower)



HYATT REGENCY CHICAGO
 151 East Wacker Drive
 Chicago, Illinois 60601, USA
 T +1 312 565 1234
 F +1 312 239 4541
 chicago.regency.hyatt.com



CAPACITY CHART



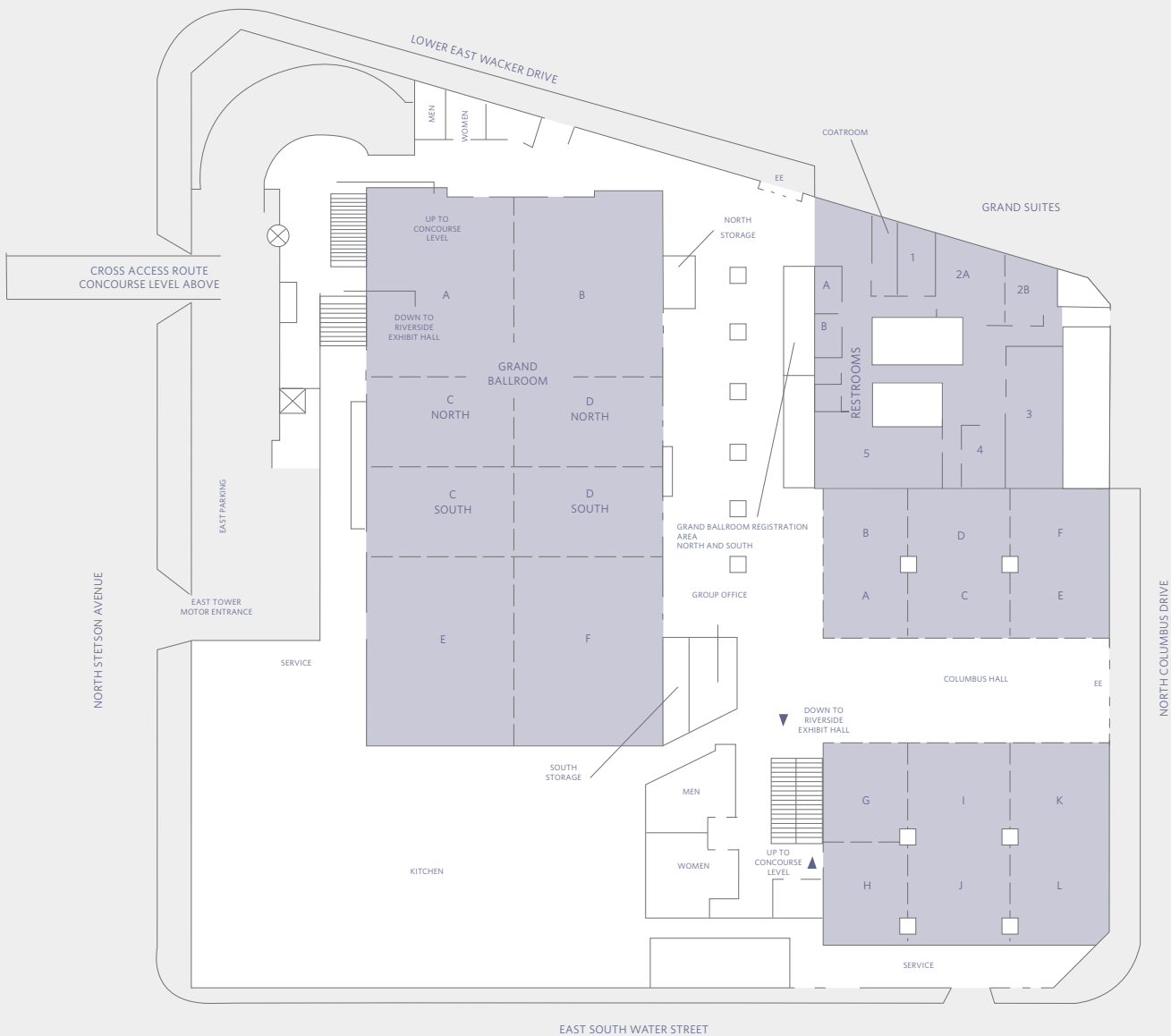
Room Name	Room Dimensions L x W x H	Room Size Sq. Ft.	Banquet 6' Rnds of 10 (No AV)	Reception	Theater (AV)	Classroom (AV)	Boardroom	U-Shape	Hollow Square	Exhibit
Ballroom Level (East Tower)										
GRAND BALLROOM	213' x 114' x 17'	24,282	1,800	3,000	2,400	1,250	—	—	—	137
Grand A or B	71' x 57' x 17'	4,047	240	400	400	250	74	80	100	20
Grand AB	71' x 114' x 17'	8,094	500	800	800	500	—	—	—	45
Grand C or D	71' x 57' x 17'	4,047	240	400	400	250	74	80	100	20
Grand CD	71' x 114' x 17'	8,094	500	800	800	500	—	—	—	51
Grand C or D North	36' x 57' x 17'	2,052	110	200	200	110	36	40	50	—
Grand C or D South	36' x 57' x 17'	2,052	110	200	200	110	36	40	50	—
Grand CD North or South	36' x 114' x 17'	4,047	280	400	400	250	74	80	100	25
Grand E or F	71' x 57' x 17'	4,047	240	400	400	250	74	80	100	20
Grand EF	71' x 114' x 17'	8,094	500	800	800	500	—	—	—	45
COLUMBUS HALL	110'4" x 169'5" x 9'6"	17,628	1,250	1,800	—	—	—	—	—	93
Columbus AB	60'3" x 32' x 9'6"	1,951	120	200	180	108	52	55	60	12
Columbus CD	60'3" x 37' x 9'6"	2,243	120	200	180	108	58	55	60	12
Columbus EF	60'3" x 37'7" x 9'6"	2,310	120	225	180	108	58	60	65	12
Columbus G or H	37'8" x 34'6" x 9'6"	1,263	50	115	80	34	34	34	40	—
Columbus GH	76'8" x 34'6" x 9'6"	2,551	150	250	210	129	62	70	80	12
Columbus IJ	76'8" x 36'11" x 9'6"	2,798	170	250	225	144	70	70	80	12
Columbus KL	76'8" x 38'5" x 9'6"	2,873	170	250	225	144	70	70	80	12
GRAND SUITES										
Grand Suite 1	14' x 19' x 11'	264	10	25	16	—	8	—	—	—
Grand Suite 2A	20'9" x 25'9" x 11'	523	30	35	30	24	10	6	12	—
Grand Suite 2B	16'3" x 14' x 11'	238	10	15	15	9	8	—	—	—
Grand Suite 2AB	42'5" x 20'9" x 11'	764	40	75	60	30	14	12	18	—
Grand Suite 3	25' x 57' x 9'	1,425	80	130	120	60	40	32	36	—
Grand Suite 4	14' x 23' x 9'	322	—	—	—	—	8	—	—	—
Grand Suite 5	23' x 49' x 11'	1,127	70	100	96	60	30	22	25	—

*NOTE: Above setups are tables and chairs ONLY without space left for other equipment such as staging, AV, display tables, registration tables or coffee breaks.

HYATT REGENCY CHICAGO
 151 East Wacker Drive
 Chicago, Illinois 60601, USA
 T +1 312 565 1234
 F +1 312 239 4541
 chicago.regency.hyatt.com



FLOOR PLAN
 Ballroom Level (East Tower)



HYATT REGENCY CHICAGO
 151 East Wacker Drive
 Chicago, Illinois 60601, USA
 T +1 312 565 1234
 F +1 312 239 4541
 chicago.regency.hyatt.com

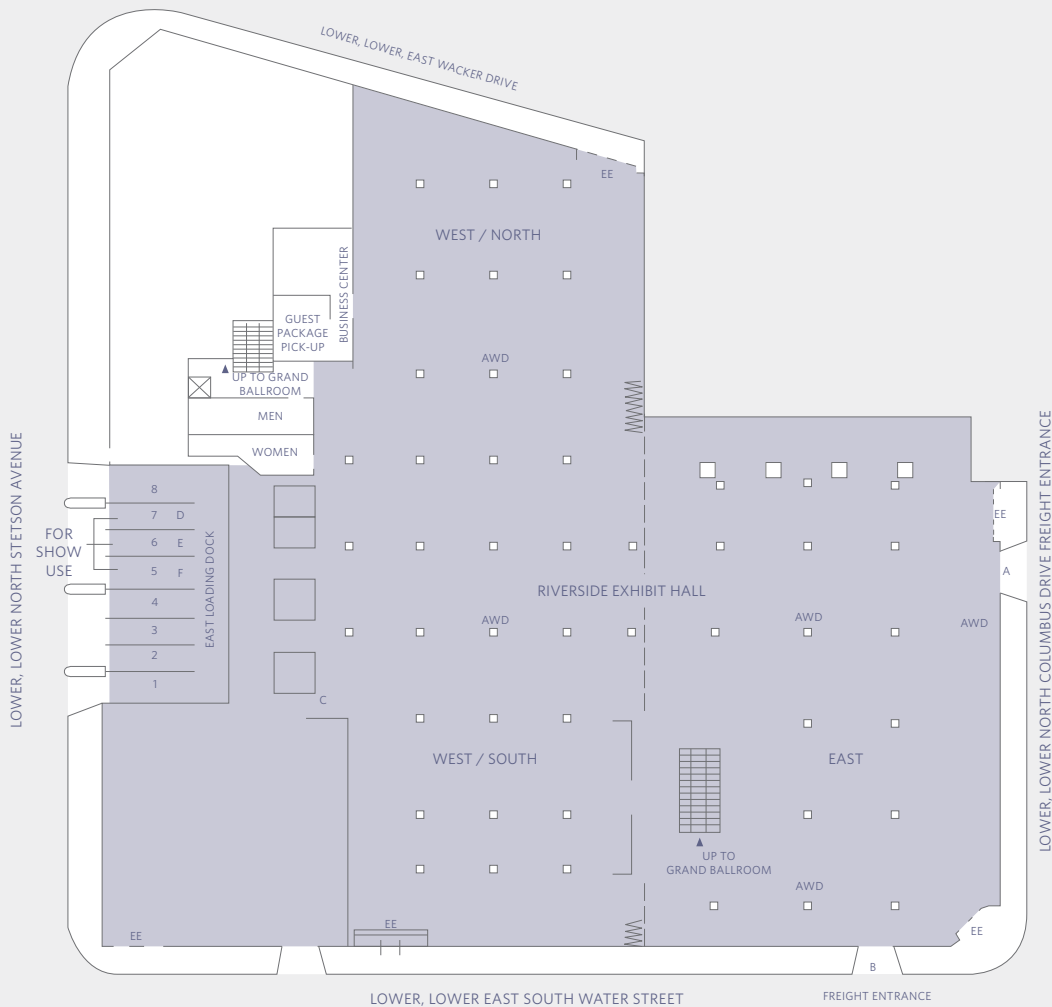


CAPACITY CHART



Room Name	Room Dimensions L x W x H	Room Size Sq. Ft.	Banquet 6' Rnds of 10 (No AV)	Reception	Theater (AV)	Classroom (AV)	Boardroom	U-Shape	Hollow Square	Exhibit
Exhibit Level (East Tower)										
RIVERSIDE EXHIBIT HALL										
HALL	CEILING HEIGHT 12'	70,000	2,330	7,000	—	—	—	—	—	355
EAST	—	30,000	870	2,500	2,400	—	—	—	—	151
WEST	—	40,000	1,330	4,500	3,300	—	—	—	—	204
EAST DOCK (D, E, F)	—	3 Bays	—	—	—	—	—	—	—	—

FLOOR PLAN



Note: Above setups are tables and chairs ONLY without space left for other equipment such as staging, AV, display tables, registration tables or coffee breaks.

HYATT REGENCY CHICAGO
 151 East Wacker Drive
 Chicago, Illinois 60601, USA
 T +1 312 565 1234
 F +1 312 239 4541
 chicago.regency.hyatt.com

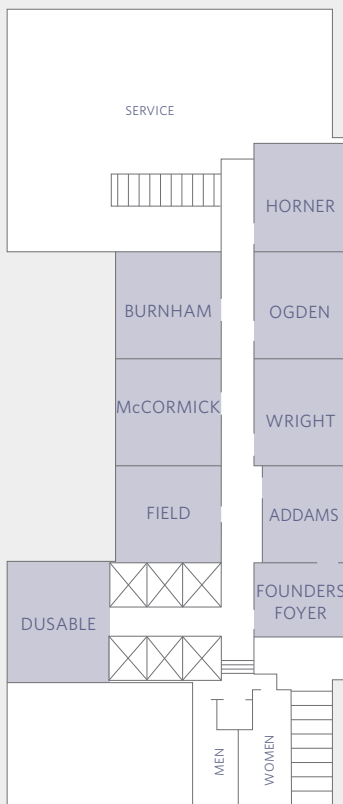


CAPACITY CHART



Room Name	Room Dimensions L x W x H	Room Size Sq. Ft.	Banquet 6' Rnds of 10 (No AV)	Reception	Theater (AV)	Classroom (AV)	Boardroom	U-Shape	Hollow Square	Exhibit
Third Floor (West Tower)										
FOUNDERS SUITES										
Dusable	26'5" x 26'7" x 9'	677	40	60	50	27	28	18	30	—
Field	25'5" x 26'3" x 9'	688	40	60	50	27	28	18	30	—
McCormick	25'5" x 26'3" x 9'	688	40	60	50	27	28	18	30	—
Burnham	25'5" x 24' x 10'	688	40	60	50	27	28	18	30	—
Addams	22' x 24'10" x 9'	556	40	50	32	18	20	15	18	—
Wright	23'8" x 26'3" x 9'	628	40	60	40	24	24	18	24	—
Ogden	23'8" x 26'3" x 9'	628	40	60	40	24	24	18	24	—
Horner	23'8" x 26'3" x 9'	628	40	60	40	24	24	18	24	—
Founders Foyer	16' x 23'10" x 9'	446	—	—	—	—	8	—	—	—

FLOOR PLAN



Note: Above setups are tables and chairs ONLY without space left for other equipment such as staging, AV, display tables, registration tables or coffee breaks.

HYATT REGENCY CHICAGO
 151 East Wacker Drive
 Chicago, Illinois 60601, USA
 T +1 312 565 1234
 F +1 312 239 4541
 chicago.regency.hyatt.com

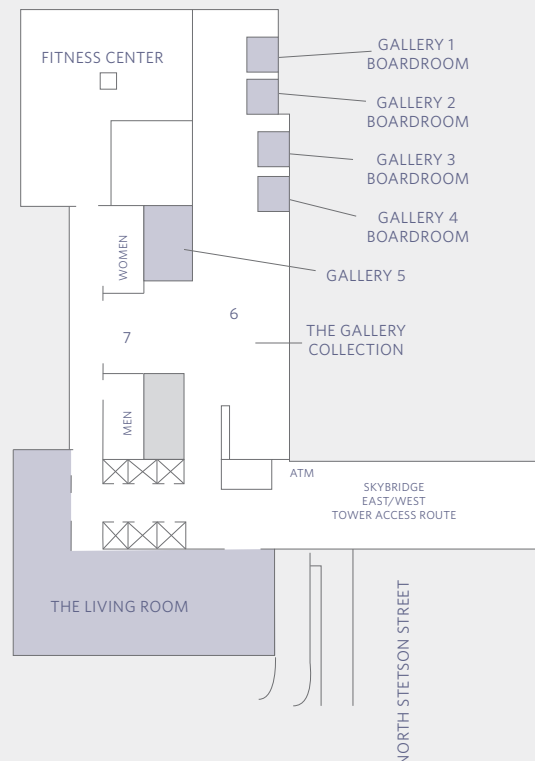


CAPACITY CHART



Room Name	Room Dimensions L x W x H	Room Size Sq. Ft.	Banquet 6' Rnds of 10 (No AV)	Reception	Theater (AV)	Classroom (AV)	Boardroom	U-Shape	Hollow Square	Exhibit
Skyway Level (West Tower)										
THE LIVING ROOM	—	—	—	—	—	—	—	—	—	—
GALLERY COLLECTION										
The Gallery Lounge 6	23' x 52'10"	1,206	—	—	—	—	—	—	—	—
The Gallery Lounge 7	32'2" x 24'2"	759	—	—	—	—	—	—	—	—
Gallery 1 Boardroom	21'4" x 10'4"	223	—	—	—	—	10	—	—	—
Gallery 2 Boardroom	21'4" x 11'4"	251	—	—	—	—	10	—	—	—
Gallery 3 Boardroom	21'4" x 12'2"	258	—	—	—	—	10	—	—	—
Gallery 4 Boardroom	21'4" x 11'10"	284	—	—	—	—	10	—	—	—
Gallery 5	17'9" x 28'4"	470	20	40	30	24	18	—	—	—

FLOOR PLAN



Note: Above setups are tables and chairs ONLY without space left for other equipment such as staging, AV, display tables, registration tables or coffee breaks.

HYATT REGENCY CHICAGO
 151 East Wacker Drive
 Chicago, Illinois 60601, USA
 T +1 312 565 1234
 F +1 312 239 4541
 chicago.regency.hyatt.com

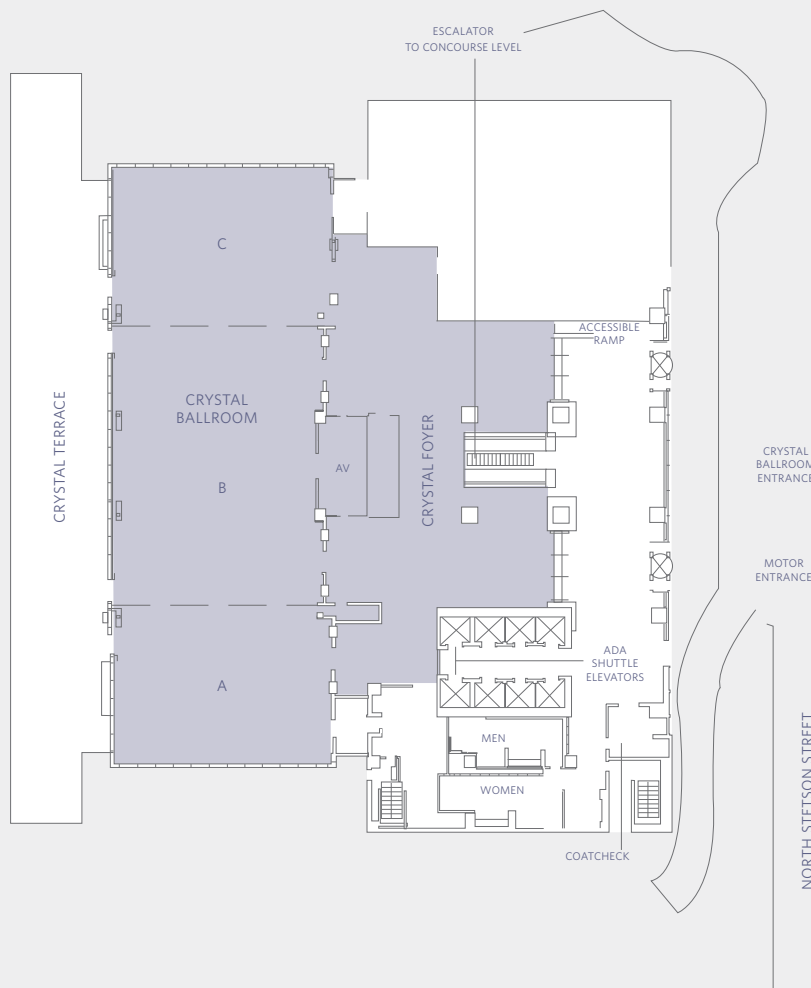


CAPACITY CHART



Room Name	Room Dimensions L x W x H	Room Size Sq. Ft.	Banquet 6' Rnds of 10 (No AV)	Reception	Theater (AV)	Classroom (AV)	Boardroom	U-Shape	Hollow Square	Exhibit
Lobby Level (West Tower)										
CRYSTAL BALLROOM	167' x 59' x 19'	9,853	700	1,000	950	500	—	—	—	40
Crystal A	43' x 59' x 19'	2,584	160	250	280	125	50	56	66	—
Crystal B	80' x 56' x 19'	4,559	320	500	450	240	100	70	82	—
Crystal C	43' x 59' x 19'	2,586	160	250	280	125	50	56	66	—
Crystal AB or BC	123' x 59' x 19'	7,198	480	750	870	380	120	129	150	—
CRYSTAL FOYER	—	5,120	—	400	—	—	—	—	—	—

FLOOR PLAN



Note: Above setups are tables and chairs ONLY without space left for other equipment such as staging, AV, display tables, registration tables or coffee breaks.

HYATT REGENCY CHICAGO
 151 East Wacker Drive
 Chicago, Illinois 60601, USA
 T +1 312 565 1234
 F +1 312 239 4541
 chicago.regency.hyatt.com



CAPACITY CHART

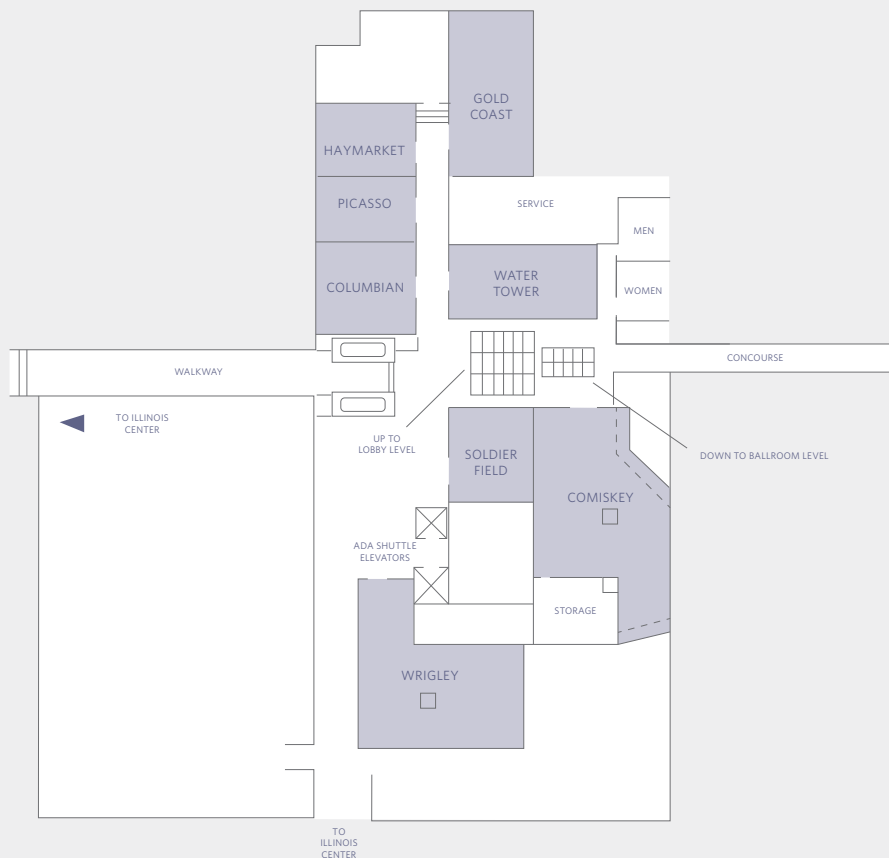


Room Name	Room Dimensions L x W x H	Room Size Sq. Ft.	Banquet 6' Rnds of 10 (No AV)	Reception	Theater (AV)	Classroom (AV)	Boardroom	U-Shape	Hollow Square	Exhibit
-----------	------------------------------	----------------------	-------------------------------------	-----------	-----------------	-------------------	-----------	---------	------------------	---------

Concourse Level (West Tower)

LANDMARK SUITES										
Comiskey	40' x 62' x 9'	1,982	70	200	90	84	40	36	42	—
Water Tower	45'3" x 25' x 9'	1,143	80	120	120	54	28	26	36	—
Gold Coast	47'6" x 25' x 9'	1,178	80	120	120	54	28	26	36	—
Haymarket	29'6" x 19'6" x 9'	562	40	60	30	24	24	20	25	—
Picasso	29'6" x 22' x 9'	599	40	60	30	30	24	18	24	—
Columbian	27'3" x 25' x 9'	681	40	60	60	33	26	25	30	—
Soldier Field	34' x 25'8 x 9'	789	40	70	45	30	24	25	30	—
Wrigley	43' x 52' x 9'	1,540	70	140	60	48	30	25	30	—

FLOOR PLAN



Note: Above setups are tables and chairs ONLY without space left for other equipment such as staging, AV, display tables, registration tables or coffee breaks.

HYATT REGENCY CHICAGO
 151 East Wacker Drive
 Chicago, Illinois 60601, USA
 T +1 312 565 1234
 F +1 312 239 4541
 chicago.regency.hyatt.com



CAPACITY CHART



Room Name	Room Dimensions L x W x H	Room Size Sq. Ft.	Banquet 6' Rnds of 10 (No AV)	Reception	Theater (AV)	Classroom (AV)	Boardroom	U-Shape	Hollow Square	Exhibit
Ballroom Level (West Tower)										
REGENCY BALLROOM	72' x 230' x 11'8"	16,560	1,000	1,600	1,600	750	—	—	—	90
Regency A, B, C or D	72' x 58' x 11'8"	4,176	240	400	400	220	70	72	100	20
Regency AB, BC or CD	72' x 117' x 11'8"	8,424	480	800	800	450	140	144	200	40
Regency ABC or BCD	72' x 174' x 11'8"	12,528	750	1,200	1,200	675	—	—	—	60
INTERNATIONAL SUITES	59'6" x 81'3" x 7'6"	3,936	240	350	—	—	—	—	—	22
Toronto	59'6" x 26'6" x 8'5"	1,558	100	150	120	96	55	55	60	10
Hong Kong	28' x 27' x 8'5"	808	40	50	60	36	30	23	28	3
Acapulco	59'6" x 27' x 8'5"	1,558	100	150	120	96	55	55	60	10
CITY SUITES										
Atlanta	24' x 32' x 7'9"	768	40	60	60	36	24	18	24	—
San Francisco	25' x 26' x 7'9"	650	40	60	55	27	24	29	32	—
New Orleans	28' x 33' x 7'9"	906	50	70	65	45	30	24	30	—
West Tower (36th Floor)										
BOARD OF TRADE	23' x 27'	621	—	—	—	—	16	—	—	—

*NOTE: Above setups are tables and chairs ONLY without space left for other equipment such as staging, AV, display tables, registration tables or coffee breaks.

HYATT REGENCY CHICAGO
151 East Wacker Drive
Chicago, Illinois 60601, USA
T +1 312 565 1234
F +1 312 239 4541
chicago.regency.hyatt.com



FLOOR PLAN
Ballroom Level (West Tower)



HYATT REGENCY CHICAGO
 151 East Wacker Drive
 Chicago, Illinois 60601, USA
 T +1 312 565 1234
 F +1 312 239 4541
 chicago.regency.hyatt.com

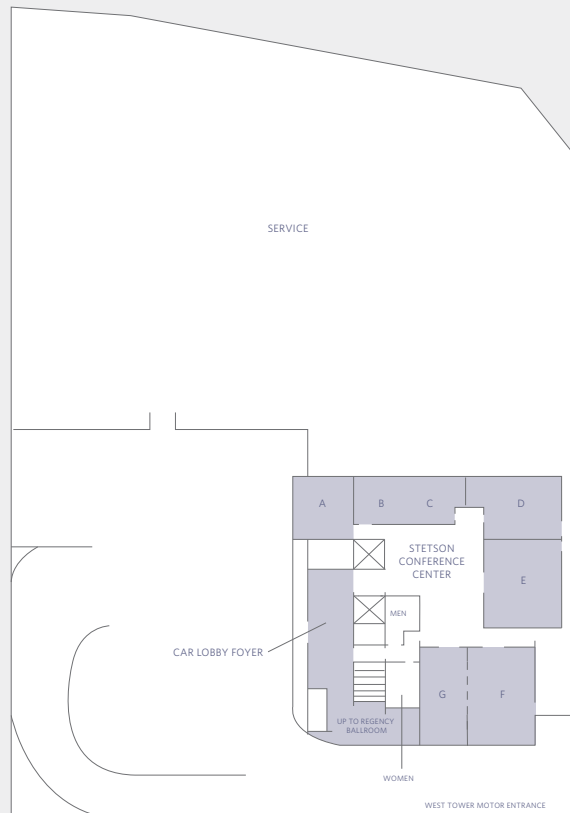


CAPACITY CHART



Room Name	Room Dimensions L x W x H	Room Size Sq. Ft.	Banquet 6' Rnds of 10 (No AV)	Reception	Theater (AV)	Classroom (AV)	Boardroom	U-Shape	Hollow Square	Exhibit
Exhibit Level (West Tower)										
STETSON CONFERENCE CENTER										
Stetson Suite A	9' x 19' x 8'	378	10	25	24	15	12	—	—	—
Stetson Suite BC	30' x 17' x 8'	510	30	40	45	18	24	27	30	—
Stetson Suite D	18' x 24' x 8'	432	10	25	30	18	20	10	12	—
Stetson Suite E	30' x 27' x 8'	810	40	55	50	21	26	14	16	—
Stetson Suite F	36' x 25' x 8'	900	50	60	70	45	34	18	20	—
Stetson Suite G	36' x 14' x 8'	504	30	40	48	27	14	14	14	—
Stetson Suite F-G	36' x 39' x 8'	1,404	80	90	—	—	—	—	—	—

FLOOR PLAN



Note: Above setups are tables and chairs ONLY without space left for other equipment such as staging, AV, display tables, registration tables or coffee breaks.