

WELCOME  
TO A  
*different*  
PLACE<sup>®</sup>

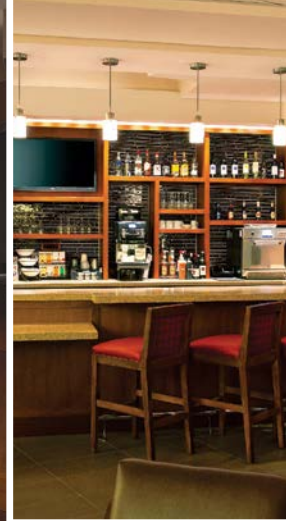


# WHAT MAKES HYATT PLACE®

## A *different* PLACE

---





# YOUR GUIDE TO *all things* HYATT PLACE

## HYATT PLACE PARK CITY

### HOTEL FEATURES

- Gallery Hosts available 24/7
- Free Wi-Fi and remote printing everywhere
- Express checkout at noon
- Free public computers with high-speed Internet access in the Gallery
- 24-hour StayFit Gym featuring cardio equipment with LCD touchscreens
- Smoke-free hotel
- Free parking
- Free shuttle service offered within a 5-mile radius, every day from 7:00 a.m. to 10:00 p.m.
- Outdoor pool & hot tub
- Odds & Ends offers a menu of must-have items for guests to buy, borrow or enjoy for free

### ROOMY ROOMS

- 122 guestrooms
- Hyatt Grand Bed®
- Swiveling 42" flat screen HDTV
- Hyatt Plug Panel™ (in select guestrooms)
- Cozy Corner is the perfect place to sit back and relax (sofa sleeper in all guestrooms)
- Mini-fridge and single-serve coffeemaker
- KenetMD™ luxury skin and hair care amenities
- Separate workspace
- In-room safe

### 24/7 EAT & DRINK

- Gallery Kitchen Breakfast always has plenty to choose from with hot breakfast items at participating locations, fresh fruit and more
  - Weekdays 6:30–9:30 a.m.
  - Weekends 7:00–10:00 a.m.
- 24/7 Gallery Menu offers freshly prepared meals any time day or night
- 24/7 Gallery Market offers perfectly packaged grab 'n go items, from snacks and sandwiches to pastries and sweets
- Coffee to Cocktails Bar offers specialty beverages made with Starbucks® espresso roast and a variety of premium beers, wines & cocktails

### EARN FREE NIGHTS






- Join the World of Hyatt global loyalty program and earn free nights at Hyatt hotels and resorts worldwide

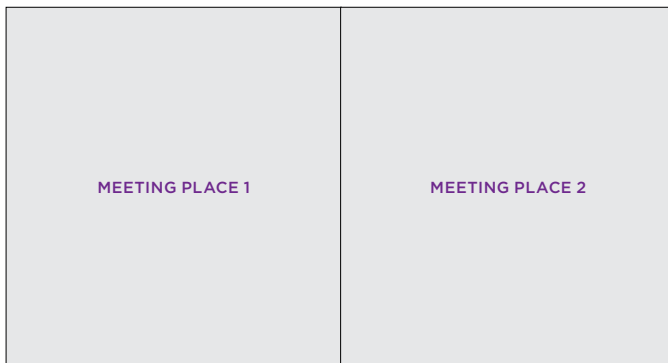
### EXPLORE

- Park City Mountain
- Deer Valley Resort
- Historic Main Street
- Utah Olympic Park & Alf Engen Ski Museum
- Park City Museum

# THE *perfect* MEETING NEEDS THE *perfect* PLACE

## ROOM DIMENSIONS & CAPACITIES

ROOM NAME	ROOM DIMENSIONS L X W X H / METERS	SQUARE FEET METERS	 CLASSROOM	 THEATER	 CONFERENCE	 U-SHAPE	 BANQUET
MEETING PLACE 1	20' X 30' 6.1M X 9.1M	800 243.8	27	60	24	21	48
MEETING PLACE 2	20' X 30' 6.1M X 9.1M	800 243.8	27	60	24	21	48
MEETING PLACE 1 & 2	40' X 60' 12.2M X 18.2M	1600 487.7	54	120	48	42	96



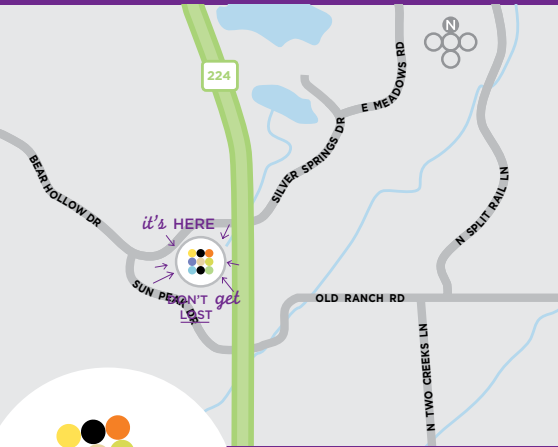
### MEETINGS & EVENTS

- Flexible meeting spaces with unique food & beverage options, audiovisual equipment and more
- Gallery Host manages every detail

### CATERING

- Hot and cold breakfast options
- Business or casual lunch options
- Quick bites and beverages for break time
- Reception packages

TO FIND OUT MORE ABOUT PLANNING YOUR NEXT EVENT, CALL 435 776 1234



## HYATT PLACE PARK CITY

4377 North Highway 224  
Park City, UT 84098, USA  
P 435 776 1234  
F 435 776 1200  
[parkcity.place.hyatt.com](http://parkcity.place.hyatt.com)

## TRANSPORTATION

- From Salt Lake International Airport (SLC):  
Take I-80 Eastbound to Park City, exit  
145 Kimball Junction (28 miles). Head south  
on State Highway 224 for 2.5 miles, Hyatt  
Place Park City is on the right.



HYATT  
PLACE®

[hyattplace.com](http://hyattplace.com)

888 HYATT HP  
(888 492 8847)