



HYATT CENTRIC®

BRICKELL MIAMI

1102 Brickell Bay Drive,
Miami, FL 33131
T: 786-441-1234
F: 305-372-1070

brickellmiami.centric.hyatt.com

ACCOMMODATIONS

- 208 guest rooms and suites
- Signature *Hyatt Grand Bed*®
- Complimentary high-speed wired and wireless Internet
- 55-inch flat-screen television, cable movie channels
- Individually controlled air conditioning and lighting
- In-room electronic safe
- *BeeKind*® signature bath amenities
- *Keurig*® Coffeemaker with complimentary coffee and tea
- In-room refrigerator
- Pet-friendly

SERVICES & FACILITIES

- 1-800-CHECK-IN®
- Restaurant-to-Go Service
- Full-service concierge
- 24-hour business center services
- Complimentary Internet services in public areas
- Multilingual staff
- Laundry/dry cleaning
- Valet parking

RESTAURANT, BAR & LOUNGE

- **Caña Restaurant** — Cuban-inspired eats
- **Pool Bar** — Casual

RECREATIONAL FACILITIES

- **Fitness Center** — Featuring state-of-the-art cardio machines and free weights open 24 hours a day
- **Pool** — Rooftop, heated outdoor pool with hot tub and poolside cabanas

CONFERENCES & BANQUETS

- Over 12,000 square feet of versatile meeting and event space
- Two meeting venues designed for up to 525 total guests
- Meeting space located on 19th floor with beautiful views of the City and Biscayne Bay
- High-speed wired and wireless Internet
- Full audio and visual services
- Professional Event and Meeting Planners

LOCATION

Miami's Brickell neighborhood is a contrasting beauty, with glittering skyscrapers poised above scenic Biscayne Bay. Stay downtown in the city's tallest skyscraper, Panorama Tower, minutes from the port of Miami.

VISITOR INFORMATION

Language: English

Currency: USD

Climate: Warm weather year-round

Visa: Please refer to your local travel consultant prior to travel

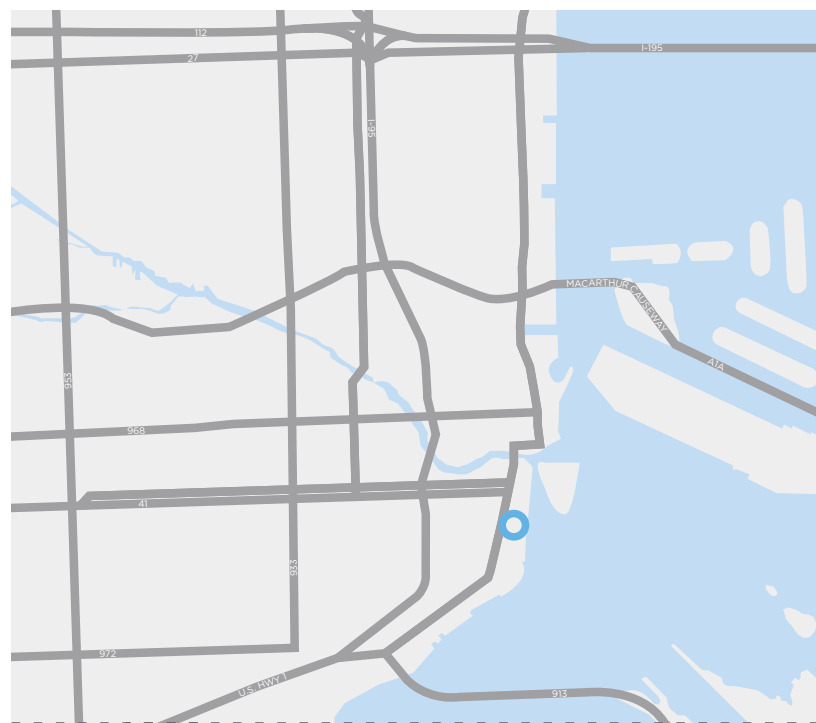
POINTS OF INTEREST

- Brickell
- Key Biscayne
- Little Havana
- Coral Gables
- South Beach
- Miami Beach
- Downtown Miami
- Wynwood
- The Design District
- Midtown Miami
- Coconut Grove
- Port of Miami
- Frost Museum of Science
- Pérez Art Museum Miami

TRANSPORTATION

Miami Int'l Airport:
9 miles/17 mins

Fort Lauderdale-Hollywood Int'l Airport:
29 miles/35 mins



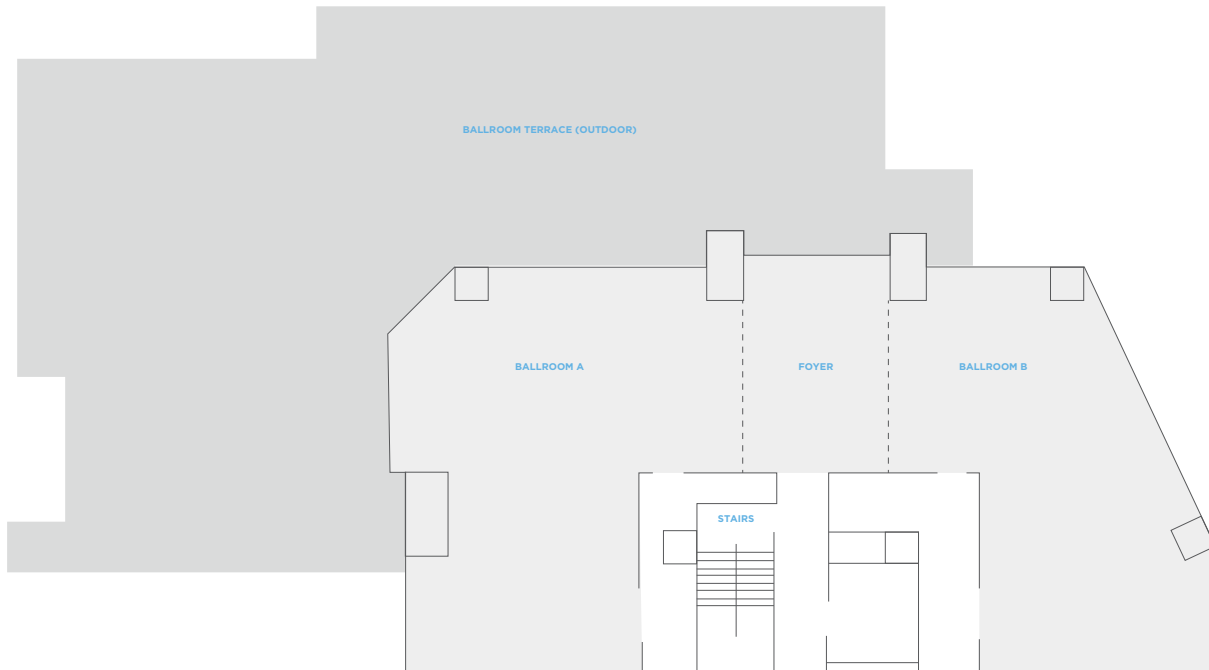


HYATT CENTRIC®
BRICKELL MIAMI

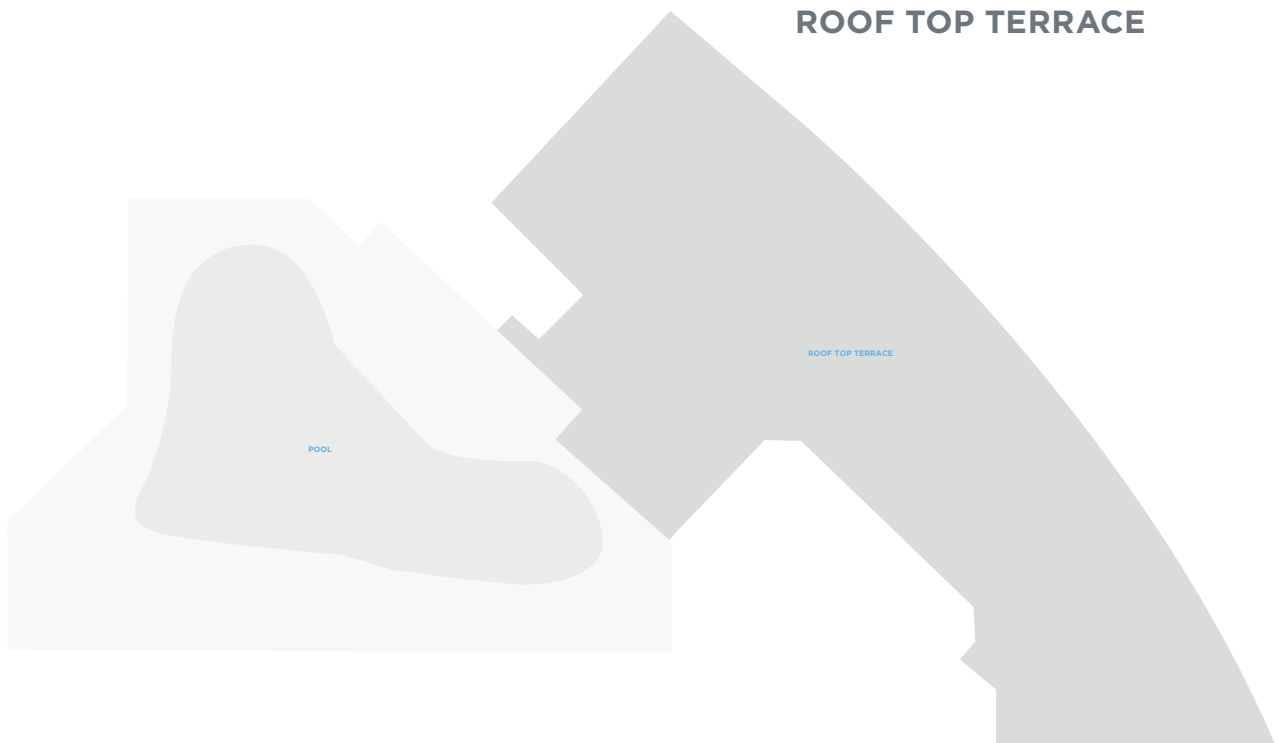
1102 Brickell Bay Drive,
Miami, FL 33131
T: 786-441-1234
F: 305-372-1070

brickellmiami.centric.hyatt.com

FLOOR PLAN: 19th FLOOR



ROOF TOP TERRACE





HYATT CENTRIC®

BRICKELL MIAMI

1102 Brickell Bay Drive,
Miami, FL 33131
T: 786-441-1234
F: 305-372-1070

brickellmiami.centric.hyatt.com

ROOM CAPACITIES AND DIMENSIONS



Room Name	Room Dimensions L x W x H	Room Size Sq. Ft.	Banquet Rnds of 10	Reception	Theater	Classroom	Boardroom	U-Shape	Hollow Square
FIRST FLOOR - Meeting Room is on the 19th Floor									
Ballroom A	58' x 21' x 11'	1,555	80	70	70	65	20	25	30
Ballroom B	58' x 21' x 11'	1,276	70	70	60	55	20	20	25
Ballroom AB	58' x 57' x 11'	3,235	150	140	130	120	40	45	45
Foyer	28' x 15' x 11'	404	-	-	-	-	-	-	-
Ballroom Terrace (Outdoor)	118' x 38' x -	4,277	150	150	-	-	-	-	-
Roof Top Terrace (Outdoor)	28' x 15' x -	4,698	-	150	-	-	-	-	-