



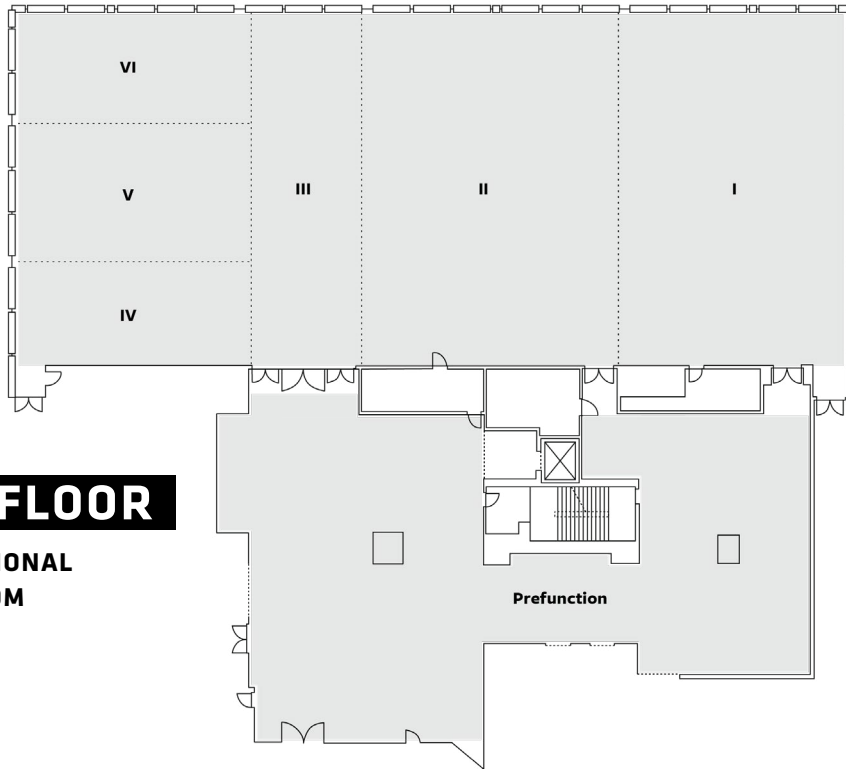
NINE AT THE NATIONAL

Nine at The National is an airy, sophisticated, and magnificently appointed indoor/outdoor dining space, destined to be THE spot for breakfast, lunch, and brunch in Dallas. Food offerings will feature contemporary takes of classic American fare with global influences. Catering to hotel guests, lunch meetings and weekend festivities, light and refreshing cocktails are highlighted along with bright, easy drinking wines by the glass.



CATBIRD

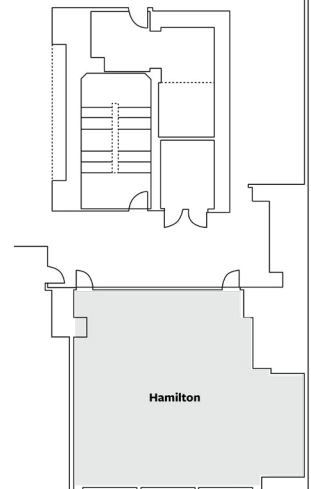
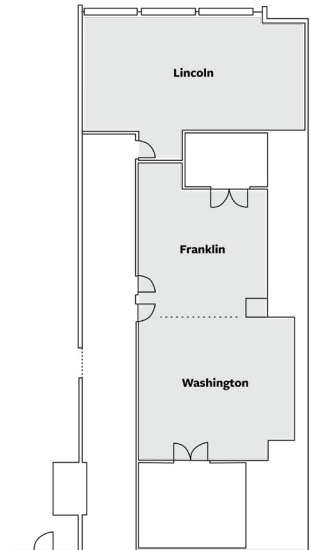
With a stylish pavilion ensconced with lush greenery and cozy fire pits, guests enjoy stunning views of the Dallas skyline from the 10th floor of Thompson Dallas. Dine on eclectic sharable dishes that are beautifully executed and surprising in all the right ways. Sip on exquisitely crafted cocktails while vibing to the best live music and DJs Dallas has to offer. The indoor/outdoor space invites exploration, while the fixtures and artwork emanate an understated opulence that is both welcoming and intriguing. The view is always better, when you're at the top... at Catbird.



4TH FLOOR

THE NATIONAL BALLROOM

5TH FLOOR MEETING ROOMS



MEETING SPACES							
ROOM NAME	L x W x H	SQ FT	BANQUET	SCHOOLROOM	U-SHAPE	THEATER	RECEPTION
The National	177' x 75' x 21'	13,457	1,050	560	385	1,494	1,346
The National I	48' x 75' x 21'	3,729	310	155	107	414	373
The National II	54' x 75' x 21'	4,059	338	169	116	451	406
The National III	27' x 75' x 21'	2,030	140	104	75	240	203
The National IV	48' x 22' x 21'	1,092	91	45	31	121	109
The National V	48' x 30' x 21'	1,422	118	59	41	158	142
The National VI	48' x 24' x 21'	1,125	94	47	32	125	113
Pre-function	50' x 79' x 9'	4,403	N/A	N/A	N/A	N/A	440
Lincoln	20' x 34' x 9'	715	59	30	20	79	72
Franklin	18' x 21' x 9'	397	33	17	11	44	40
Washington	26' x 25' x 9'	661	55	28	19	73	66
Hamilton	33' x 38' x 9'	1,096	91	46	31	122	110